

# 1st half **2024** **PROMOTIONS**



Leading in Innovation



*Valid from January 1st to June 30th, 2024*

[www.tungaloy.com/us](http://www.tungaloy.com/us)

# SH7025

Valid from January 1st to June 30th, 2024



## ACHIEVE ULTIMATE SURFACE QUALITY MACHINING SMALL PARTS RELIABLY!

A unique design that prevents adhesion, wear, and chipping of the cutting edge, ensuring prolonged life and consistently high-quality machined surfaces.

**BUY 40** inserts

AND

**GET 10** corresponding inserts

**FREE**  
*of charge!*  
Promo code: **TG204**

insert geometry:

CCGT  
DCGT  
VBGT  
VPGT

Chipbreaker type:

01  
J10  
JP  
JS  
W08



Video



For more information



## MODULAR HEAD TURNING TOOLHOLDER SYSTEM FOR SWISS MACHINES

Significantly reduces machine downtime for changing tools and setups.

<p><b>BUY 1</b> head and <b>10</b> inserts</p> <p>AND</p> <p><b>GET 1</b> corresponding CHP head</p>	<p><b>50%</b> additional discount</p> <p>Promo code: TG203</p>
<p><b>BUY 1</b> head and <b>10</b> inserts</p> <p>AND</p> <p><b>GET 1</b> corresponding shank</p>	<p><b>FREE</b> of charge!</p> <p>Promo code: TG203</p>



ModuMiniTurn inserts (Turning)  
DX\*U07  
VXGU09  
WXGU04

MiniV-LockGroove inserts  
(Grooving & Threading)  
VGP10  
VGT10

TetraMiniCut (Grooving & Threading)  
TCG18...  
TCP18...  
TCS18...  
TCL18...  
TCF18...  
TCT18...

Inserts:  
11ER... (Threading)  
J10R... (Back turning)

TungCut inserts (Grooving)  
DGM...  
DGS...  
DTE...  
DTX...  
DTR...  
DTM...  
DGL...

CW = 0.047" - 0.125"

Grades:  
AH6235, AH7025, AH8005,  
AH905, KS05F, NS9530,  
T9225, T515

AH725  
(DGS1.2-003, DGS1.4-005,  
DGS1.4-010, DGS2-005,  
DGS2-010)



Video

For more information

## EFFECTIVE THREADING SOLUTIONS FOR CNC LATHES, SWISS-TYPE LATHES AND MULTITASKING MACHINES

AH8015 versatile PVD grade for superior wear and chipping resistance in a wide range of materials.

**BUY 20** inserts

AND

**GET 5** corresponding inserts

**FREE**  
of charge!  
Promo code: TG205

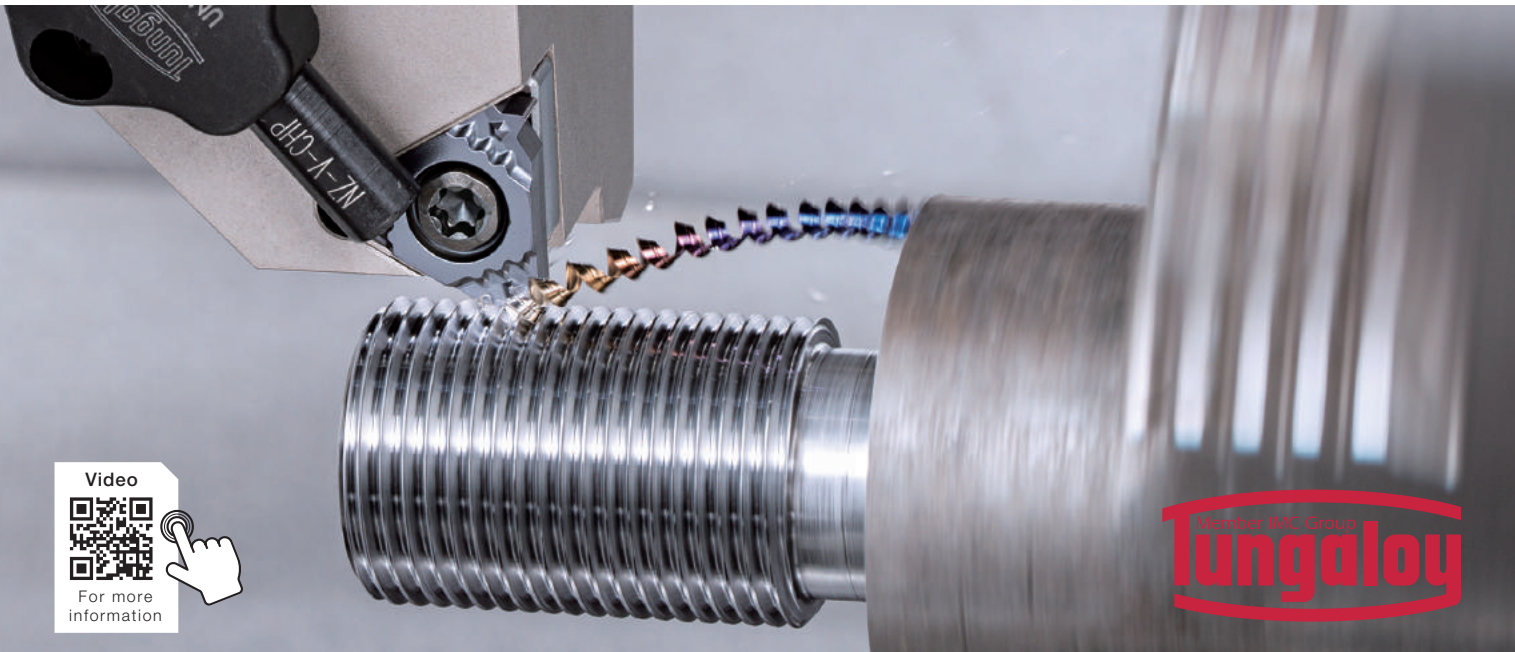
Insert:

3-cornered inserts sizes 11, 16 and 22

1-cornered insert size 6

Grade:

AH8015



Video



For more information



## THREADING INSERTS WITH ECONOMICAL 4-CUTTING EDGES

Sharp cutting edge for reduced cutting load, improving thread surface quality. Suitable for thread pitches ranging from 0.4 mm to 3 mm.

**BUY 10 inserts**

AND

**GET 1 toolholder at**

**50%**  
additional  
discount  
Promo code: TG206

**Insert:**

TCT18R...-ISO (Full Profile insert) Pitch = 0.5 – 1.5 mm (16 - 48 TPI)

TCT18R...-UN (Full Profile insert) TPI = 16 - 32

TCT18R...-UNJ (Full Profile insert) TPI = 28 - 32

TCT18R...-W (Full Profile insert) TPI = 11 - 28

TCT18FR/R/L-60...(Partial profile insert) Pitch = 0.4 – 3.0 mm (8 - 64 TPI)

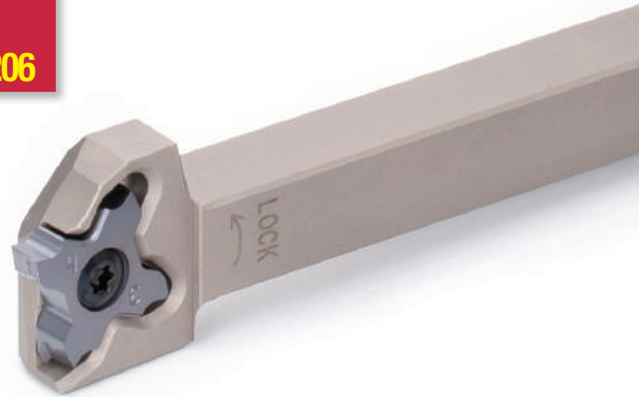
TCT18R/L-55...(Partial profile insert) TPI = 8 – 28 mm

**Grade:**

AH725

AH8015

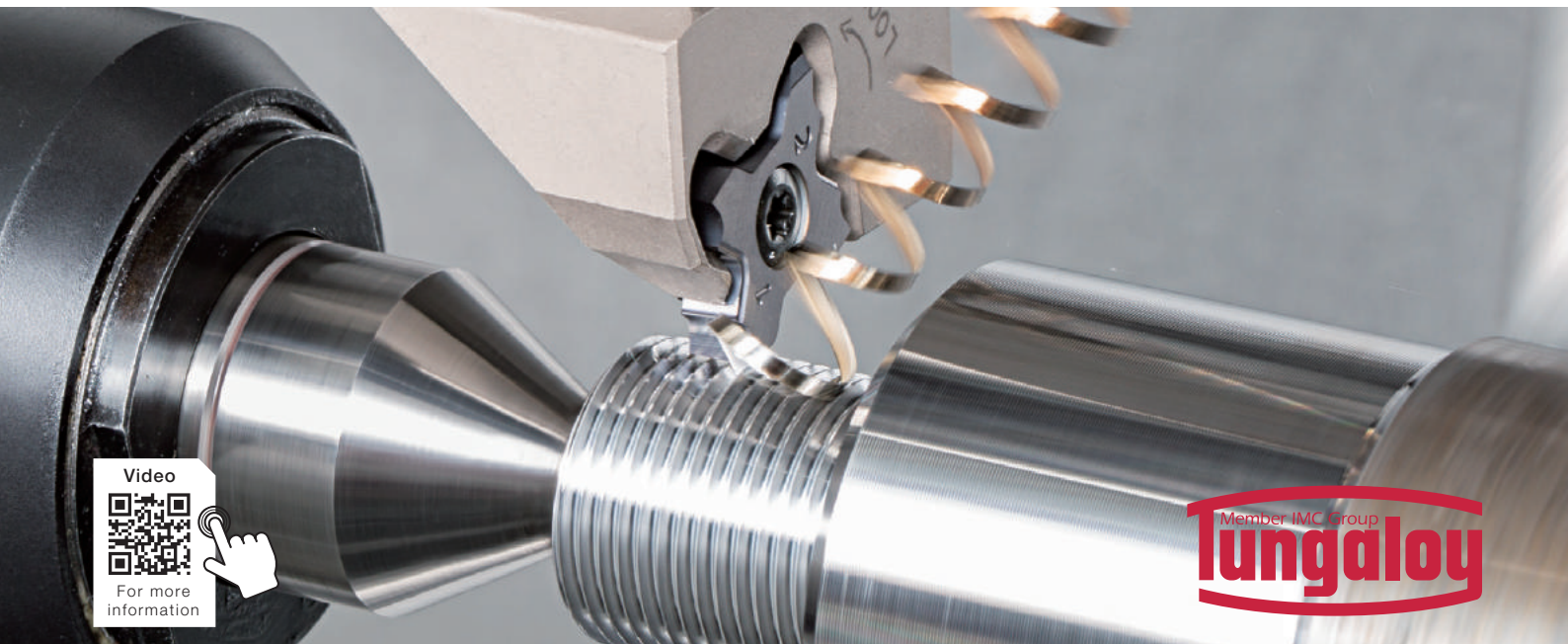
SH725



TCT18\*\*\*-55/60...  
Partial profile



TCT18...-ISO/UN/UNJ/W  
Full profile



## SUPERB STABILITY AND PRODUCTIVITY IN DEEP GROOVING AND PARTING-OFF OPERATIONS

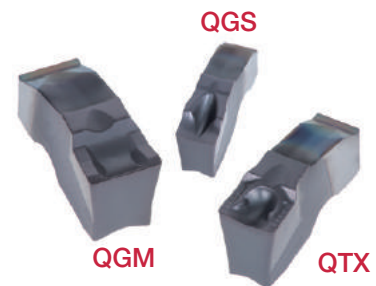
Newly designed insert profile ensures unobstructed chip flow and consistent chip evacuation.

**BUY 20** inserts  
AND  
**GET 1** blade, holder or adaptor  
**FREE of charge!**  
Promo code: TG210

**BUY 20** inserts  
AND  
**GET 1** CHP blade or holder  
**50% additional discount**  
Promo code: TG210

**BUY 10** inserts + **1** block  
AND  
**GET 1** blade or holder  
**FREE of charge!**  
Promo code: TG211

**BUY 10** inserts + **1** block  
AND  
**GET 1** CHP blade or holder  
**50% additional discount**  
Promo code: TG211



### Inserts

QGM, QGS and QTX inserts (AH7025, AH6235)

CW = 0.79", 0.118", 0.157", 0.197, 0.236" and 0.315" (2, 3, 4, 5, 6 and 8 mm)

Max. grooving depths CDX = 1.29" (33 mm) (for monoblock shanks)

### NOTE:

Please inquire with your local Tungaloy representative regarding the tool holders offered in this promotion.



## NEW DOUBLE-ENDED SMALL-SIZE INTERNAL GROOVING INSERTS WITH ROBUST DESIGN

Economical inserts for internal grooving,  $DMIN = 12\text{ mm}$ .

**BUY 20** inserts

AND

**GET 1** head or holder

**FREE**  
of charge!

Promo code: **TG207**

Grade: AH7025

Toolholder for internal grooving:  
CTIR\*\*S

Cutting heads for BoreMeister Series:  
S\*\*-CTIR..-H

DGS\*S type  
(2 corners)



DTR\*S type  
(2 corners)



## HIGH PRECISION GROOVING AND THREADING TOOL SERIES FOR CNC AUTOMATIC LATHES

Perfect for grooving and threading bar stocks of 12 mm or smaller diameters.

**BUY 10 inserts**  
AND  
**GET 1 toolholder or 1 head**

**FREE of charge!**  
Promo code: TG208

**BUY 10 inserts**  
AND  
**GET 1 CHP toolholder**

**50% additional discount**  
Promo code: TG208

Insert:  
VGP08/10 (for Grooving)  
CW = 0.33 - 1 mm (0.012" - 0.039")

VGP08/10

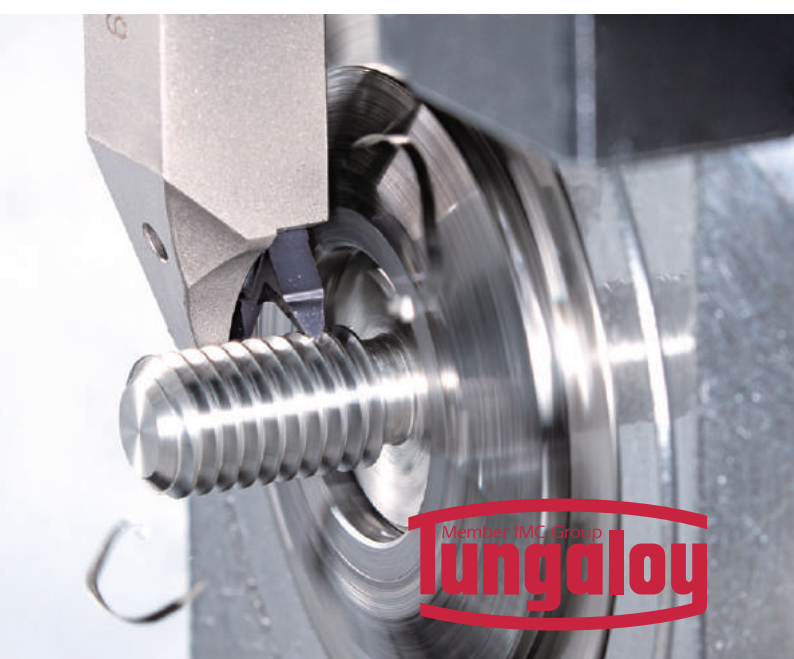
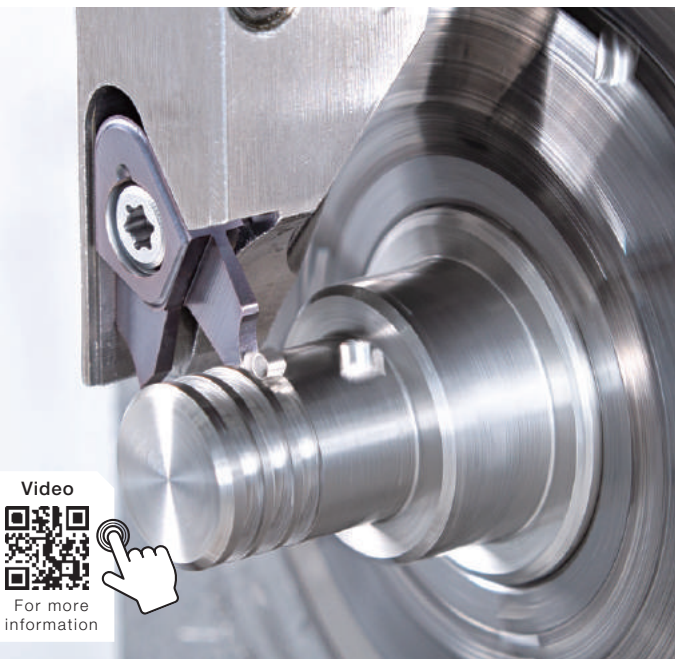


VGT10F



Insert:  
VGT10F (for Threading)  
Pitch = 0.4 - 2 mm  
TPI = 12 - 64  
Cutting edge angle = 55°, 60°

Toolholder:  
All



Video  
  
For more information



## INNOVATIVE TURNING TOOL SERIES FOR CNC AUTOMATIC LATHES AND CAM-DRIVEN LATHES

Ideal for machining small parts of 12 mm or smaller diameters.

**BUY 10** inserts

AND

**GET 1** toolholder

**FREE**  
*of charge!*  
Promo code: **TG209**

### Inserts:

JVPN\*\*R/L (for Grooving and Parting-off)

CW = 0.5, 0.6, 0.8, 1 mm (0.020", 0.024", 0.031", and 0.039")

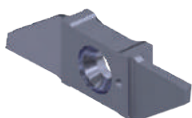
JVFN45R/L (for Front Turning)

JVNR/L (Blank insert)

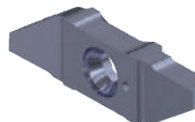
### Toolholder:

0606, 0707, 0808, and 1010 type

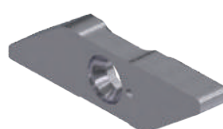
JVPN\*\*R/L



JVFN45R/L



JVNR/L



Video



For more information

# MULTI-FUNCTION SOLUTION FOR A WIDE RANGE OF OPERATIONS

Innovative four-edged inserts provide ultimate machining flexibility and economy. All-round cutter with center cutting capability provides ultimate machining versatility.

**BUY 10** inserts per  
AND  
**GET 1** Cutter

**FREE**  
*of charge!*  
Promo code: **TG199**



**Insert:**  
LXMU-MM (AH120, AH3225, AH8015)



**Shank type:**  
**EVLX06/08/10/12/16/19...**  
(Short type) DC =  $\varnothing 0.500'' - \varnothing 1.500''$   
(Short type) DC =  $\varnothing 12 - \varnothing 40$  mm  
**EVLX06/08/10/12/16/19...L**  
(Long type) DC =  $\varnothing 0.500'' - \varnothing 1.500''$   
(Long type) DC =  $\varnothing 12 - \varnothing 40$  mm

**Modular type:**  
**HVLX06/08/10/12/16...**  
DC =  $\varnothing 12 - \varnothing 33$  mm

**LXMU-MM**

**Size 06:**  
APMX 0.197", 5 mm  
Tool dia.:  $\varnothing 0.500''$   
 $\varnothing 12 - \varnothing 13$  mm

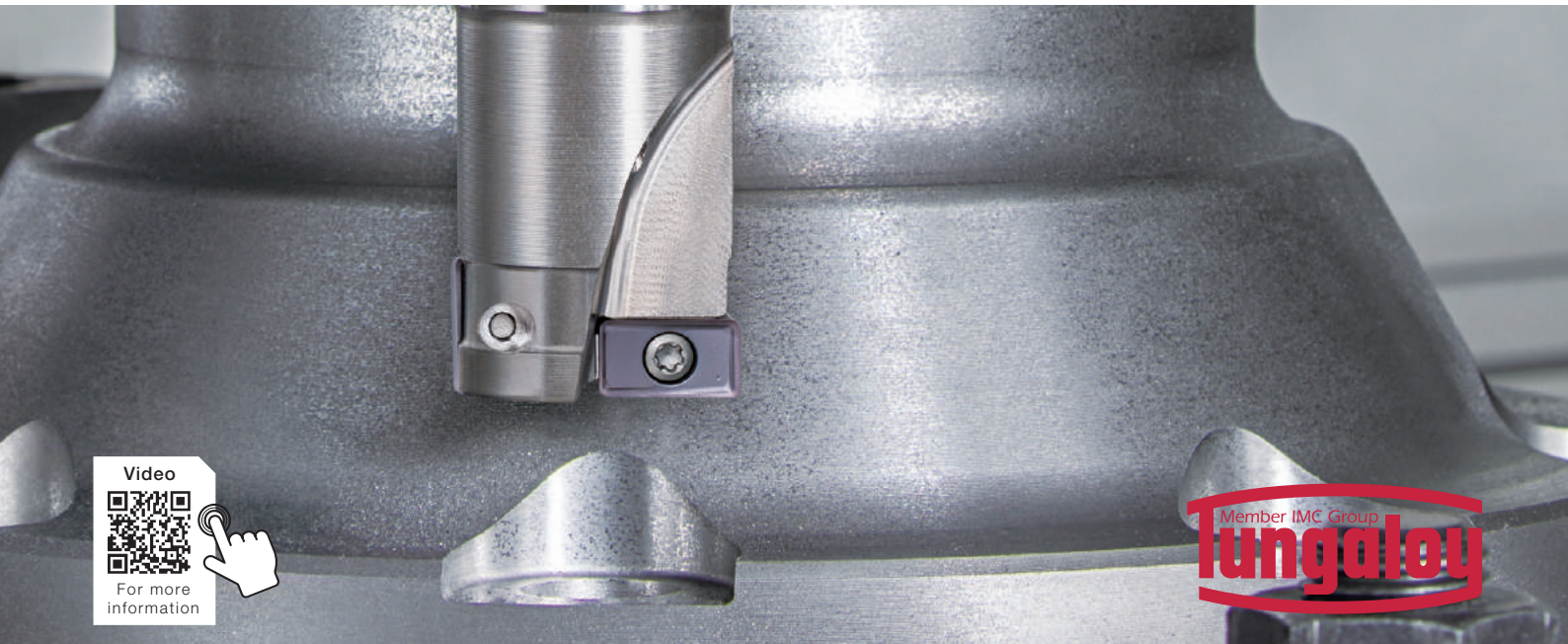
**Size 08:**  
APMX 0.276", 7 mm  
Tool dia.:  $\varnothing 0.625''$   
 $\varnothing 16 - \varnothing 17$  mm

**Size 10:**  
APMX 0.354", 9 mm  
Tool dia.:  $\varnothing 0.787''$   
 $\varnothing 20 - \varnothing 21$  mm

**Size 12:**  
APMX 0.433", 11 mm  
Tool dia.:  $\varnothing 1.000''$   
 $\varnothing 25 - \varnothing 26$  mm

**Size 16:**  
APMX 0.570", 14.5 mm  
Tool dia.:  $\varnothing 1.250''$   
 $\varnothing 32 - \varnothing 33$  mm

**Size 19:**  
APMX 0.708", 18 mm  
Tool dia.:  $\varnothing 1.500''$   
 $\varnothing 40$  mm



Video

For more information

## HIGHLY-VERSATILE FACE MILLING CUTTERS FOR A WIDE VARIETY OF MATERIALS

DoTriple-Mill features an improved dovetail clamping structure and offers triple advantage of using square, octagonal, and round inserts in the same pocket.

**BUY 10 inserts per pocket**  
AND **GET 1 Cutter**  
up to max 50 inserts

**FREE**  
of charge!  
Promo code: TG202

Limited up to diameter 5" (125 mm)

**Insert:**

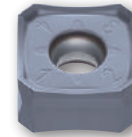
**SN\*U-MJ/MH/W** (AH120, AH3135, AH3225, T1215, T3225)  
APMX = 6 mm (0.236")

**ON\*U-MJ/W** (AH120, AH3135, AH3225, T1215, T3225)  
APMX = 3.4 mm (0.134")

**RNMU-MJ** (AH120, AH3135, AH3225, T1215, T3225)  
APMX = 6 mm (0.236")

**Bore type:**

**TASN13**  
DC =  $\varnothing 2'' - \varnothing 5''$ ,  $\varnothing 50 - \varnothing 125\text{mm}$



**SN\*U**

Double-sided, square insert



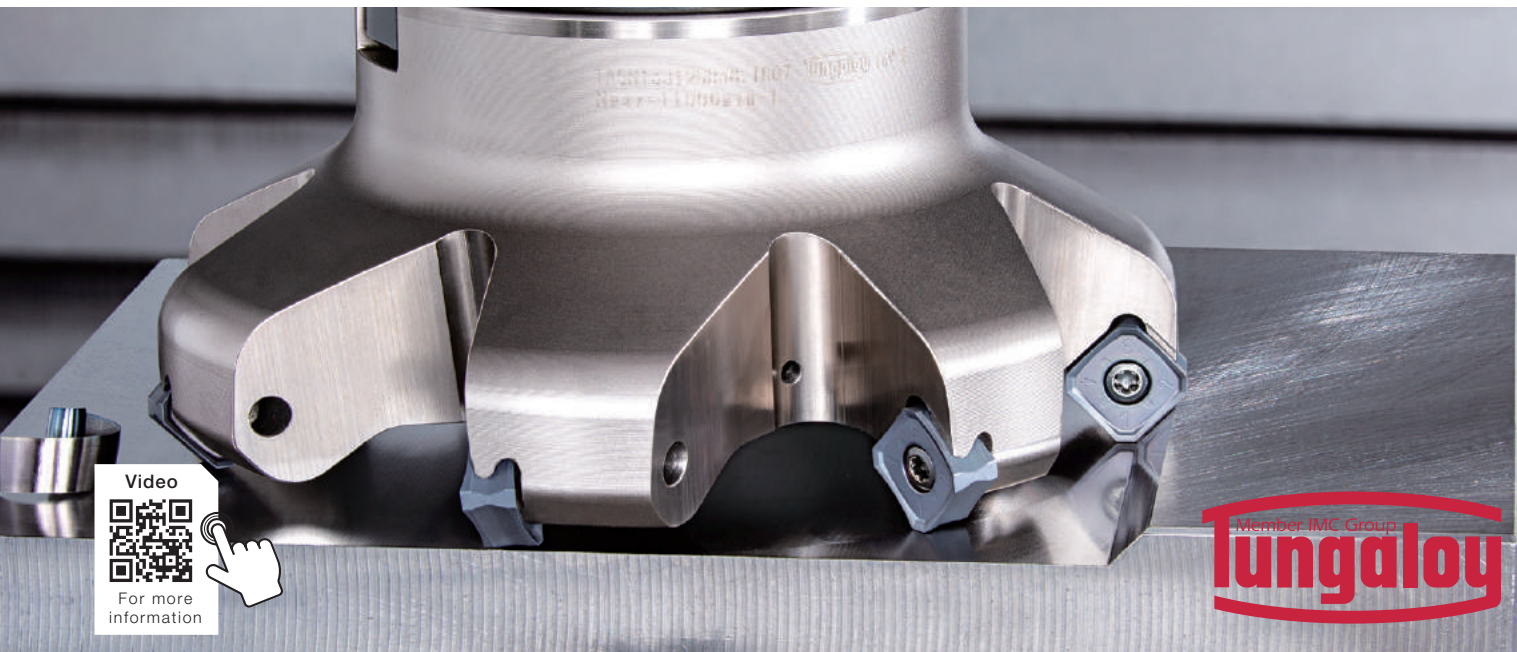
**ON\*U**

Double-sided, octagonal insert



**RNMU**

Double-sided, round insert



## HIGH-FEED MILLING CUTTER WITH MAXIMUM VERSATILITY AND EFFICIENCY

2 types of inserts can fit one cutter body providing two different entry angles.

**BUY 10** inserts per pocket  
**AND** up to max 50 inserts  
**GET 1** Cutter

**FREE**  
of charge!  
Promo code: **TUS20**



SWMT...UER-MM  
For long tool life



SWMT...ZER-MM/MJ  
For low cutting force

Limited up to 5" diameter

**Insert:**

SWMT09/15\*\*ZER

SWMT09/15\*\*UER

(AH8015, AH120, AH3225, AH3135, AH130)

APMX = 0.039" - 0.098"

**Shank type:**

EXSW09/15...

DCX =  $\phi 1"$  -  $\phi 1.25"$

**Bore type:**

TXSW09/15...

DCX =  $\phi 1.5"$  -  $\phi 5"$



Video



For more information



## PROFILING CUTTER FOR 3-DIMENSIONAL MACHINING DUE TO HELICAL CUTTING EDGES

Unique twisted insert geometries assures secure insert clamping for high stability.  
Two types of inserts fit one cutter: radius and high efficiency inserts.

**BUY 10** inserts per  
**AND** pocket up to max 50 inserts  
**GET 1** Cutter

**FREE**  
of charge!  
Promo code: TG200

**Insert:**

LNMX04/05/06-MJ/ML (Radius type)  
(AH3135, AH120, AH8015, AH3225)  
APMX = 0.157" - 0.236"

LNMX04/06-HJ/HL (High-feed type)  
(AH3135, AH120, AH8015, AH3225)  
APMX = 0.051" - 0.079"

**Shank type:**

EXLN04/05/06R... (Short type)  
EXLN04/05/06R\*\*L... (Long type)  
DCX =  $\varnothing$ 0.787" -  $\varnothing$ 2.000",  $\varnothing$ 20 -  $\varnothing$ 40 mm

**Modular type:**

HXLN04/05/06R...  
DCX =  $\varnothing$ 20 -  $\varnothing$ 42 mm

**Bore type:**

TXLN04/05/06R...  
DCX =  $\varnothing$ 1.50" -  $\varnothing$ 3.00",  $\varnothing$ 40 -  $\varnothing$ 66 mm



LNMX...MJ / ML  
Radius insert

LNMX...HJ / HL  
High-feed insert





Tungaloy-NTK America, Inc.  
3726 Ventura Dr.  
Arlington Heights, IL 60004  
TEL: 1-888-554-8394  
FAX: 1-888-554-8392  
info@tungaloy-ntk.com  
[tungaloy.com/us](http://tungaloy.com/us)

Leading in Innovation

Distributed by:



 FIND US ON THE CLOUD!  
[machiningcloud.com](http://machiningcloud.com)

Jan. 2024 (TJ)